

NOTE  
SEE C-0.1 FOR EXISTING CONDITIONS PLAN

NOTES:

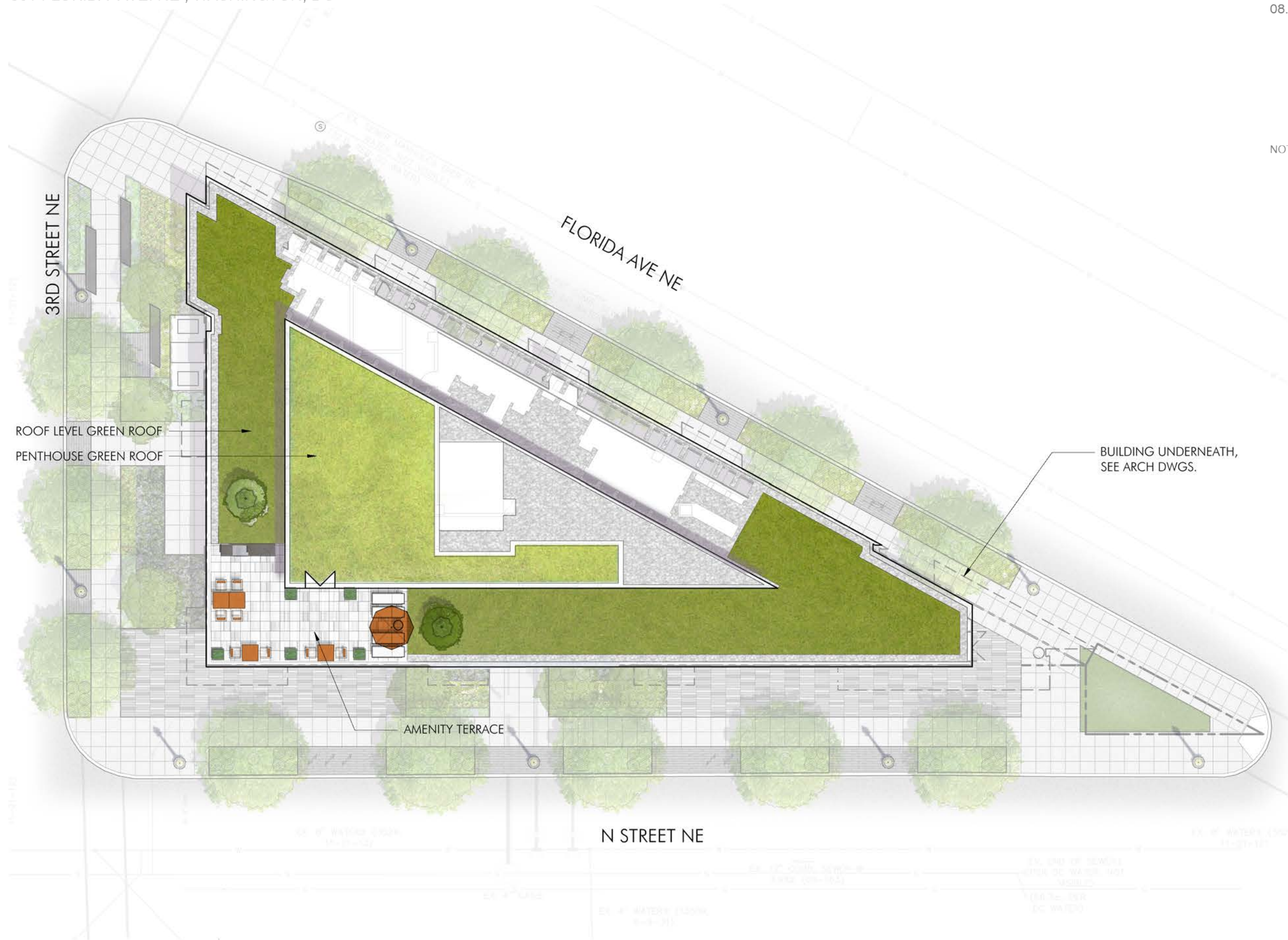
KEY / LEGEND:



GROUND FLOOR LANDSCAPE PLAN



NOTES:



KEY / LEGEND:



ROOF LEVEL LANDSCAPE PLAN

L-0.2



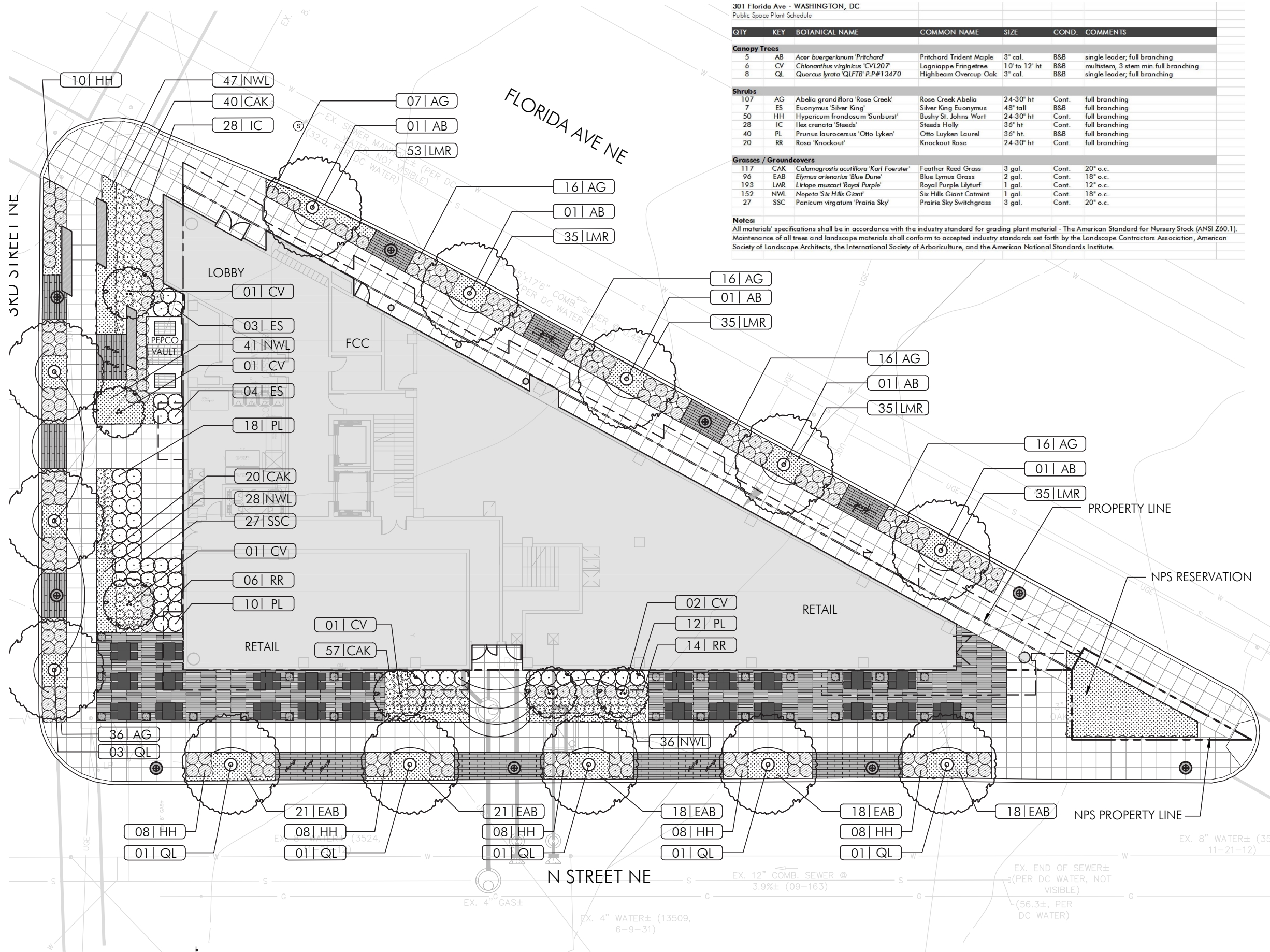
301 Florida Ave - WASHINGTON, DC  
 Public Space Plant Schedule

QTY	KEY	BOTANICAL NAME	COMMON NAME	SIZE	COND.	COMMENTS
<b>Canopy Trees</b>						
5	AB	<i>Acer buergerianum</i> 'Pritchard'	Pritchard Trident Maple	3" cal.	B&B	single leader; full branching
6	CV	<i>Chionanthus virginicus</i> 'CVL207'	Lagniappe Fringetree	10' to 12' ht	B&B	multistem, 3 stem min. full branching
8	QL	<i>Quercus lyrata</i> 'QLFTB' P.P.#13470	Highbeam Overcup Oak	3" cal.	B&B	single leader; full branching
<b>Shrubs</b>						
107	AG	<i>Abelia grandiflora</i> 'Rose Creek'	Rose Creek Abelia	24-30" ht	Cont.	full branching
7	ES	<i>Euonymus</i> 'Silver King'	Silver King Euonymus	48" tall	B&B	full branching
50	HH	<i>Hypericum frondosum</i> 'Sunburst'	Bushy St. Johns Wort	24-30" ht	Cont.	full branching
28	IC	<i>Ilex crenata</i> 'Steeds'	Steeds Holly	36" ht	Cont.	full branching
40	PL	<i>Prunus laurocerus</i> 'Otto Lyken'	Otto Lyken Laurel	36" ht.	B&B	full branching
20	RR	<i>Rosa</i> 'Knockout'	Knockout Rose	24-30" ht	Cont.	full branching
<b>Grasses / Groundcovers</b>						
117	CAK	<i>Calamagrostis acutiflora</i> 'Karl Foerster'	Feather Reed Grass	3 gal.	Cont.	20" o.c.
96	EAB	<i>Elymus arvensis</i> 'Blue Dune'	Blue Lymsus Grass	2 gal.	Cont.	18" o.c.
193	LMR	<i>Liriope muscari</i> 'Royal Purple'	Royal Purple Lilyturf	1 gal.	Cont.	12" o.c.
152	NWL	<i>Nepeta</i> 'Six Hills Giant'	Six Hills Giant Catmint	1 gal.	Cont.	18" o.c.
27	SSC	<i>Panicum virgatum</i> 'Prairie Sky'	Prairie Sky Switchgrass	3 gal.	Cont.	20" o.c.

**Notes:**  
 All materials' specifications shall be in accordance with the industry standard for grading plant material - The American Standard for Nursery Stock (ANSI Z60.1).  
 Maintenance of all trees and landscape materials shall conform to accepted industry standards set forth by the Landscape Contractors Association, American Society of Landscape Architects, the International Society of Arboriculture, and the American National Standards Institute.

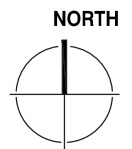
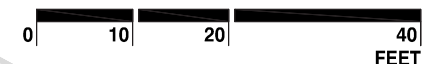
NOTES:

**PLANTING NOTE:**  
 ALL PLANTING SPECIES AND QUANTITIES ARE PROVIDED FOR REFERENCE ONLY AND MAY BE MODIFIED WITH FINAL ENGINEERING AND DESIGN PROVIDED THAT THE GENERAL QUALITY AND CHARACTERISTICS ARE IN SUBSTANTIAL CONFORMANCE WITH THAT SHOWN.



KEY / LEGEND:

KEY / LEGEND:



GROUND FLOOR PLANTING PLAN

**L-0.3**



**301 FLORIDA STREET ROOF TERRACES PLANT SCHEDULE**

**Green Roof Plant Material**

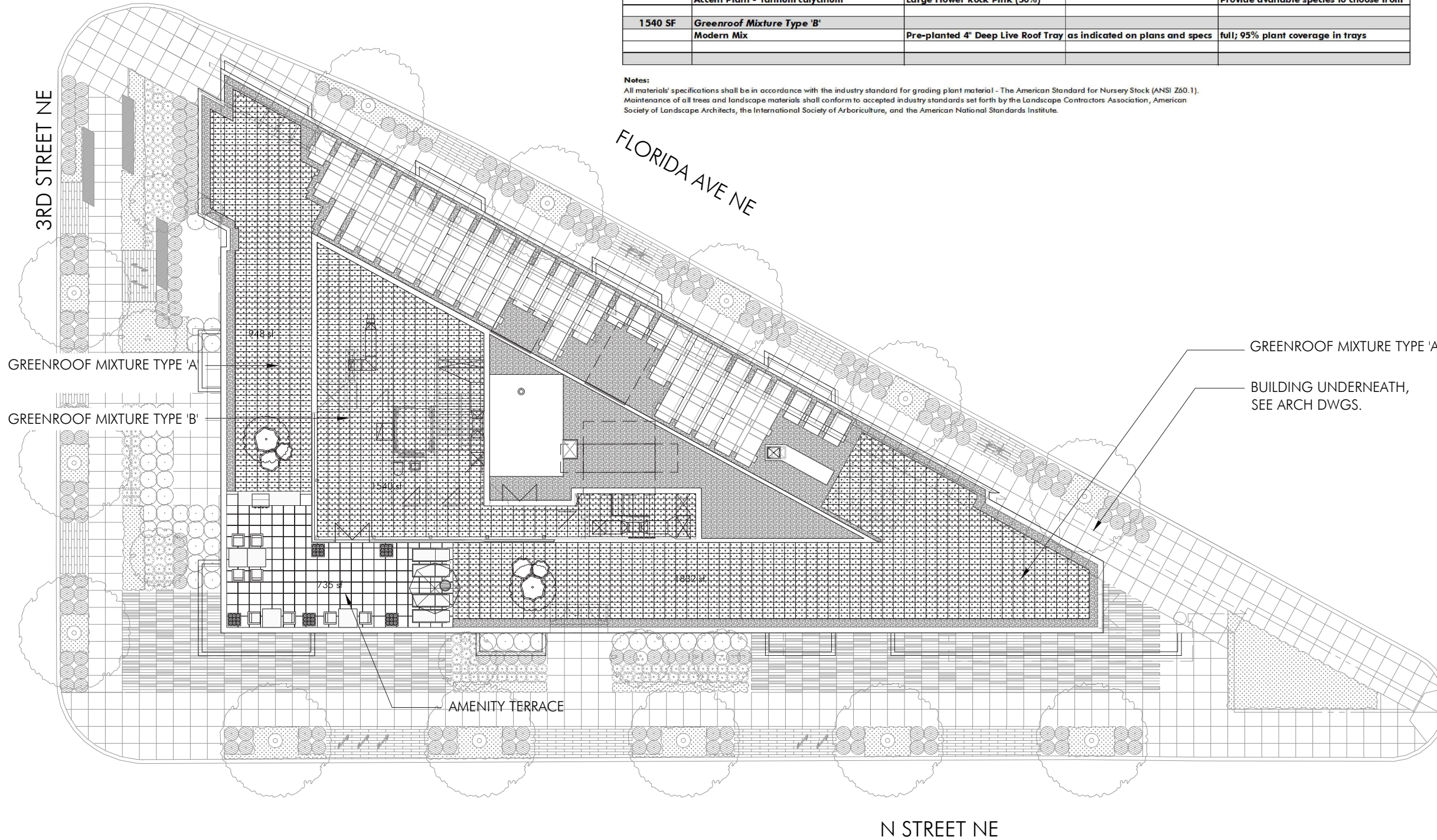
QUAN	BOTANICAL NAME	CONDITION	TRAY SIZE	REMARKS
2780 SF	<b>Greenroof Mixture Type 'A'</b>			
	Modern Mix w/ accent plants	Pre-planted 6" Deep Live Roof Tray	as indicated on plans and specs	full; 95% plant coverage in trays Provide 2 accent plants per module
	Accent Plant - <i>Allium senescens sub montanum</i>	Mountain Garlic (50%)		
	Accent Plant - <i>Talinum calycinum</i>	Large Flower Rock Pink (50%)		Provide available species to choose from
1540 SF	<b>Greenroof Mixture Type 'B'</b>			
	Modern Mix	Pre-planted 4" Deep Live Roof Tray	as indicated on plans and specs	full; 95% plant coverage in trays

**Notes:**

All materials' specifications shall be in accordance with the industry standard for grading plant material - The American Standard for Nursery Stock (ANSI Z60.1). Maintenance of all trees and landscape materials shall conform to accepted industry standards set forth by the Landscape Contractors Association, American Society of Landscape Architects, the International Society of Arboriculture, and the American National Standards Institute.

**NOTES:**

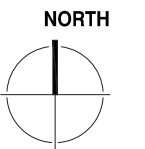
**PLANTING NOTE:**  
 ALL PLANTING SPECIES AND QUANTITIES ARE PROVIDED FOR REFERENCE ONLY AND MAY BE MODIFIED WITH FINAL ENGINEERING AND DESIGN PROVIDED THAT THE GENERAL QUALITY AND CHARACTERISTICS ARE IN SUBSTANTIAL CONFORMANCE WITH THAT SHOWN.



KEY / LEGEND:

KEY / LEGEND:

SCALE



ROOF LEVEL PLANTING PLAN

**L-0.4**

NOTES:



BIKE RACK, TYP.

TREE AMENITY SPACE WITH  
HEDGE ROW LANDSCAPE  
BUFFER

STREETLIGHT PER DDOT  
STANDARDS

RESIDENTIAL LOBBY  
ENTRANCE

3RD ST.

KEY / LEGEND:

ELEVATION - FLORIDA AVENUE

L-0.5



NOTES:



KEY / LEGEND:

ELEVATION - 3RD STREET

**L-0.6**

NOTES:



KEY / LEGEND:

ELEVATION - N STREET

**L-0.7**